

COMPUTER TECHNOLOGY

Associate in Science



Prepare for transfer to a baccalaureate degree. The Associate in Science in Computer Technology is designed to articulate with the final two years of undergraduate study at a four-year college or university.

Focus on:

- Preparation for transfer to a four-year college or university
- Knowledge of computing in the PC environment
- Developing specific diagnostic, repair, installation, network and programming skills.

Prepare for industry certifications such as:

- CompTIA A+
- CompTIA Network+
- CompTIA Linux+
- CompTIA Pentest+
- Certified Ethical Hacker (CEH)

Graduates may pursue careers in:

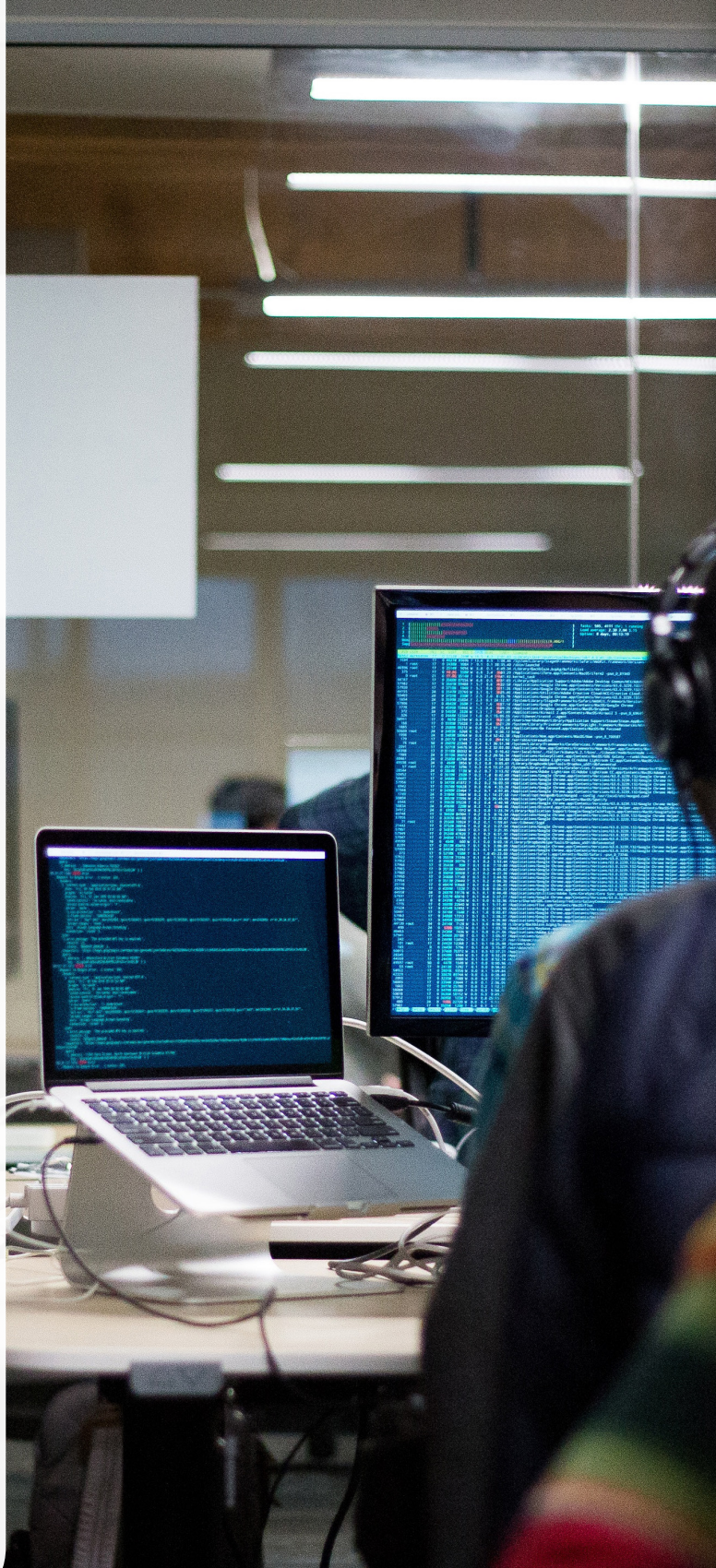
- **Computer Science**
- **Health Information Management**
- **Information Technology**
- **Cybersecurity**
- **Data Analytics**
- **Geographic Information Systems**
- **Network & Telecommunications**
- **Software Information**
- **Information Security**
- **Management Information Systems**

Interested in heading right into the workforce? Consider the Computer Technology Associate in Applied Science degree.

Degree Requirements

Semester I		Credit Hours
CPT 227	Virtualization	3
CPT 147	Introduction to PC Repair/ OS	3
ENG ___ *	Select <u>one</u> of the following:	3
	ENG 101 College Writing	
	ENG 105 College Writing Seminar	(4)
MAT ___ *	Select <u>one</u> of the following:	3
	MAT 102 Numbers and Logic	
	MAT 115 Quantitative Reasoning	
	MAT 122 College Algebra	
	MAT 125 Finite Mathematics	
	MAT 135 Statistics	
CPT 201	Linux	3
Semester II		
CPT ___	Select <u>one</u> of the following:	3
	CPT 127 Introduction to Python	
	CPT 130 Introduction to Visual Basic	
	CPT 245 Introduction to Java	
	CPT 250 Programming in C	
CPT 235	Introduction to Networking	3
CHY/PHY	Science with lab	4
ENG 201	Technical Writing	3
___	Elective: CPT	3
Semester III		
COM 100	Public Speaking	3
CPT 266	Server Administration	3
CPT 271	Introduction to Network Security	3
MAT ___ *	Select <u>one</u> of the following:	3
	MAT 102 Numbers and Logic	
	MAT 115 Quantitative Reasoning	
	MAT 122 College Algebra	
	MAT 125 Finite Mathematics	
	MAT 135 Statistics	
___	Elective: Humanities	3
Semester IV		
___	Elective: Mathematics/ Science	3
___	Elective: Social Science (advisor approved)	3
___	Elective: General Education (advisor approved)	3
PHI 101	Critical Thinking	3
CPT 298	Capstone	3
 Total Credit Hour Requirements		 61-62

*Placement determined by assessment test scores and/or prior college coursework



Office of Admissions

1250 Turner Street • Auburn, ME 04210
(207) 755-5273 • enroll@cmcc.edu

www.cmcc.edu

Find CMCC on social media at CMCCMaine!



Computer Technology Prerequisites: Algebra I

COMPUTER TECHNOLOGY

Associate in Applied Science



The Associate in Applied Science in Computer Technology prepares students for the workforce, in a variety of computer focused careers.

Students gain knowledge and experience in:

- Computing in the PC environment
- Development of specific diagnostic, repair, installation, network and programming skills

In addition to academics and hands-on experience in labs, students have the opportunity to prepare for in-demand industry standard certifications. Some examples include:

- CompTIA A+
- CompTIA Network+
- CompTIA Linux+
- CompTIA Pentest+
- Certified Ethical Hacker (CEH)

Graduates may pursue careers in:

- **PC Computer Repair Technicians**
- **PC Software Resource Personnel**
- **Network Administrators**
- **PC Computer Trainers**
- **PC/Network Sales Personnel**

Interested in transferring to a four-year college or university? Consider the Computer Technology Associate in Science degree.

Degree Requirements

Semester I		Credit Hours
CPT 227	Virtualization	3
COM ____	Select <u>one</u> of the following:	3
	COM 100 Public Speaking	
	COM 121 Group Process	
CPT 147	Introduction to PC Repair/OS	3
CPT 252	Web Development	3
ENG ____*	Select <u>one</u> of the following:	3
	ENG 101 College Writing	
	ENG 105 College Writing Seminar	(4)
Semester II		
CPT ____	Select <u>one</u> of the following:	3
	CPT 127 Introduction to Python	
	CPT 130 Introduction to Visual BASIC	
	CPT 245 Introduction to Java	
	CPT 250 Programming in C	
CPT 201	Linux	3
CPT 235	Introduction to Networking	3
MAT ____*	Select <u>one</u> of the following:	3
	MAT 102 Numbers and Logic	
	MAT 115 Quantitative Reasoning	
	MAT 122 College Algebra	
	MAT 125 Finite Mathematics	
	MAT 135 Statistics	
____	Elective: Humanities/Social Science	3
Semester III		
CPT 266	Server Administration	3
ENG 201	Technical Writing	3
MAT ____*	Select <u>one</u> of the following:	3
	MAT 102 Numbers and Logic	
	MAT 115 Quantitative Reasoning	
	MAT 122 College Algebra	
	MAT 125 Finite Mathematics	
	MAT 135 Statistics	
____	Elective: CPT	3
____	Elective: CPT	3
Semester IV		
CPT 273	Process Automation & Shell Scripting	3
CPT 298	Capstone	3
____	Elective: CPT	3
____	Elective: Open (CPT recommended)	3
____	Elective: Humanities/Social Science	3
Total Credit Hour Requirements		60-61

*Placement determined by assessment test scores and/or prior college coursework



Office of Admissions

1250 Turner Street • Auburn, ME 04210
(207) 755-5273 • enroll@cmcc.edu

www.cmcc.edu

Find CMCC on social media at CMCCMaine!



Computer Technology Prerequisites: Algebra I

NETWORK SECURITY

Advanced Certificate



The Advanced Certificate in Network Security prepares students to manage information technology systems with an emphasis on data loss prevention concepts, computer forensics, network defense, encryption, and computer investigation.

Graduates may pursue careers in:

- **Network Administration**
- **Network Security**
- **Server Administration**
- **Penetration Testing**
- **Computer Forensics**

Advanced Certificate Requirements

		Credit Hours
CPT 283	OS Hardening	3
CPT 286	Security Analysis	3
CPT 287	Database Security	3
CPT 288	Incident Handling & Response	3
CPT 289	Mobile Device Handling	3
CPT 290	Introduction to Cyber Security	3

Total Credit Hour Requirements 18

All students will be subject to a criminal background check. A criminal conviction will not automatically prevent a person from being accepted into the program.

**Placement determined by assessment test scores and/or prior college coursework*



Network Security Advanced Certificate Prerequisites:

Students must complete at least 16 additional credits beyond previous earned degree(s) in order to earn an advanced certificate. Course substitutions based on career/educational goals can be made with approval of the Department Chair. Students must not have taken elective class chosen as part of an associate degree.

Office of Admissions

1250 Turner Street • Auburn, ME 04210
(207) 755-5273 • enroll@cmcc.edu

www.cmcc.edu

Find CMCC on social media at CMCCMaine!

