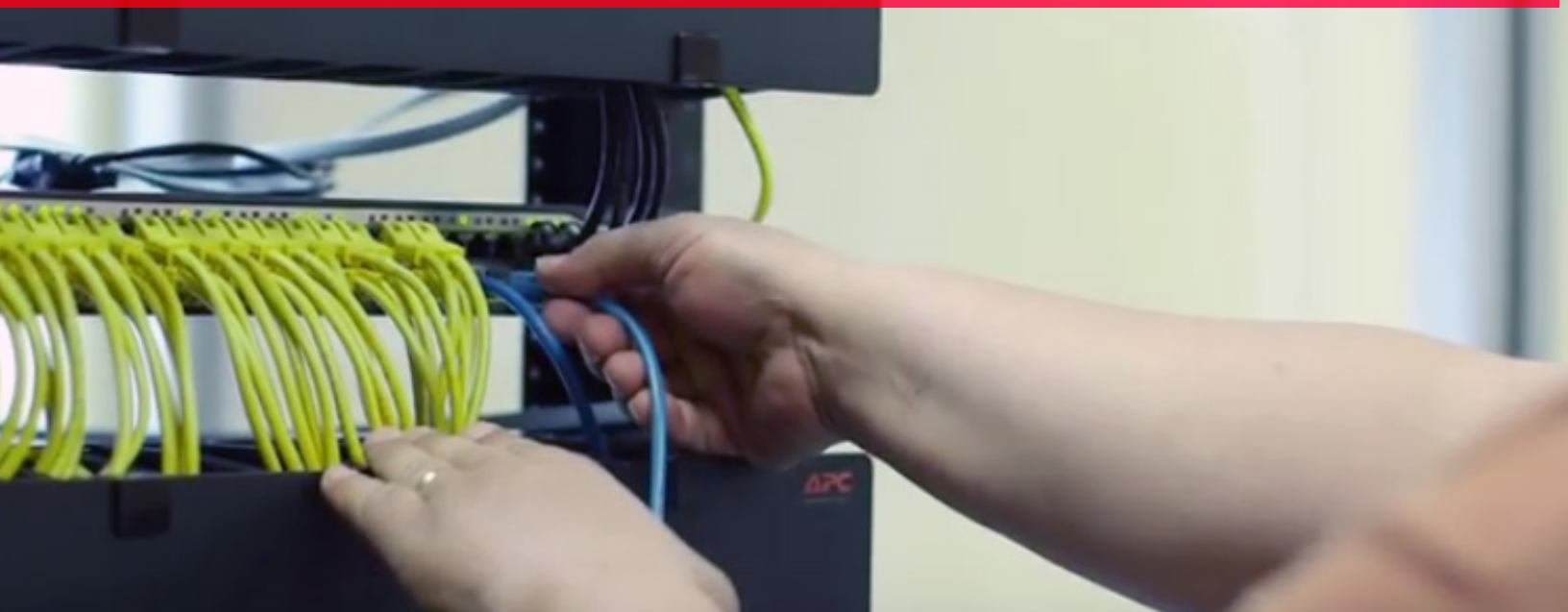


COMPUTER TECHNOLOGY

Associate in Applied Science



The Associate in Applied Science in Computer Technology prepares students for the workforce, in a variety of computer focused careers.

Students gain knowledge and experience in:

- Computing in the PC environment
- Development of specific diagnostic, repair, installation, network and programming skills

In addition to academics and hands-on experience in labs, students have the opportunity to prepare for in-demand industry standard certifications. Some examples include:

- CompTIA A+
- CompTIA Network+
- CompTIA Linux+
- CompTIA Pentest+
- Certified Ethical Hacker (CEH)

Graduates may pursue careers in:

- **PC Computer Repair Technicians**
- **PC Software Resource Personnel**
- **Network Administrators**
- **PC Computer Trainers**
- **PC/Network Sales Personnel**

Interested in transferring to a four-year college or university? Consider the Computer Technology Associate in Science degree.

Degree Requirements

Semester I		Credit Hours
CPT 227	Virtualization	3
COM ____	Select <u>one</u> of the following:	3
	COM 100 Public Speaking	
	COM 121 Group Process	
CPT 147	Introduction to PC Repair/OS	3
CPT 252	Web Development	3
ENG ____*	Select <u>one</u> of the following:	3
	ENG 101 College Writing	
	ENG 105 College Writing Seminar	(4)
Semester II		
CPT ____	Select <u>one</u> of the following:	3
	CPT 127 Introduction to Python	
	CPT 130 Introduction to Visual BASIC	
	CPT 245 Introduction to Java	
	CPT 250 Programming in C	
CPT 201	Linux	3
CPT 235	Introduction to Networking	3
MAT ____*	Select <u>one</u> of the following:	3
	MAT 102 Numbers and Logic	
	MAT 115 Quantitative Reasoning	
	MAT 122 College Algebra	
	MAT 125 Finite Mathematics	
	MAT 135 Statistics	
____	Elective: Humanities/Social Science	3
Semester III		
CPT 266	Server Administration	3
ENG 201	Technical Writing	3
MAT ____*	Select <u>one</u> of the following:	3
	MAT 102 Numbers and Logic	
	MAT 115 Quantitative Reasoning	
	MAT 122 College Algebra	
	MAT 125 Finite Mathematics	
	MAT 135 Statistics	
____	Elective: CPT	3
____	Elective: CPT	3
Semester IV		
CPT 273	Process Automation & Shell Scripting	3
CPT 298	Capstone	3
____	Elective: CPT	3
____	Elective: Open (CPT recommended)	3
____	Elective: Humanities or Social Science	3
Total Credit Hour Requirements		60-61

*Placement determined by assessment test scores and/or prior college coursework



Computer Technology Prerequisites: Algebra I

Office of Admissions

1250 Turner Street • Auburn, ME 04210
(207) 755-5273 • enroll@cmcc.edu

www.cmcc.edu

Find CMCC on social media at CMCCMaine!



COMPUTER TECHNOLOGY

Associate in Science



Prepare for transfer to a baccalaureate degree. The Associate in Science in Computer Technology is designed to articulate with the final two years of undergraduate study at a four-year college or university.

Focus on:

- Preparation for transfer to a four-year college or university
- Knowledge of computing in the PC environment
- Developing specific diagnostic, repair, installation, network and programming skills.

Prepare for industry certifications such as:

- CompTIA A+
- CompTIA Network+
- CompTIA Linux+
- CompTIA Pentest+
- Certified Ethical Hacker (CEH)

Graduates may pursue careers in:

- **Computer Science**
- **Health Information Management**
- **Information Technology**
- **Cybersecurity**
- **Data Analytics**
- **Geographic Information Systems**
- **Network & Telecommunications**
- **Software Information**
- **Information Security**
- **Management Information Systems**

**Interested in heading
right into the workforce?
Consider the Computer
Technology Associate in
Applied Science degree.**

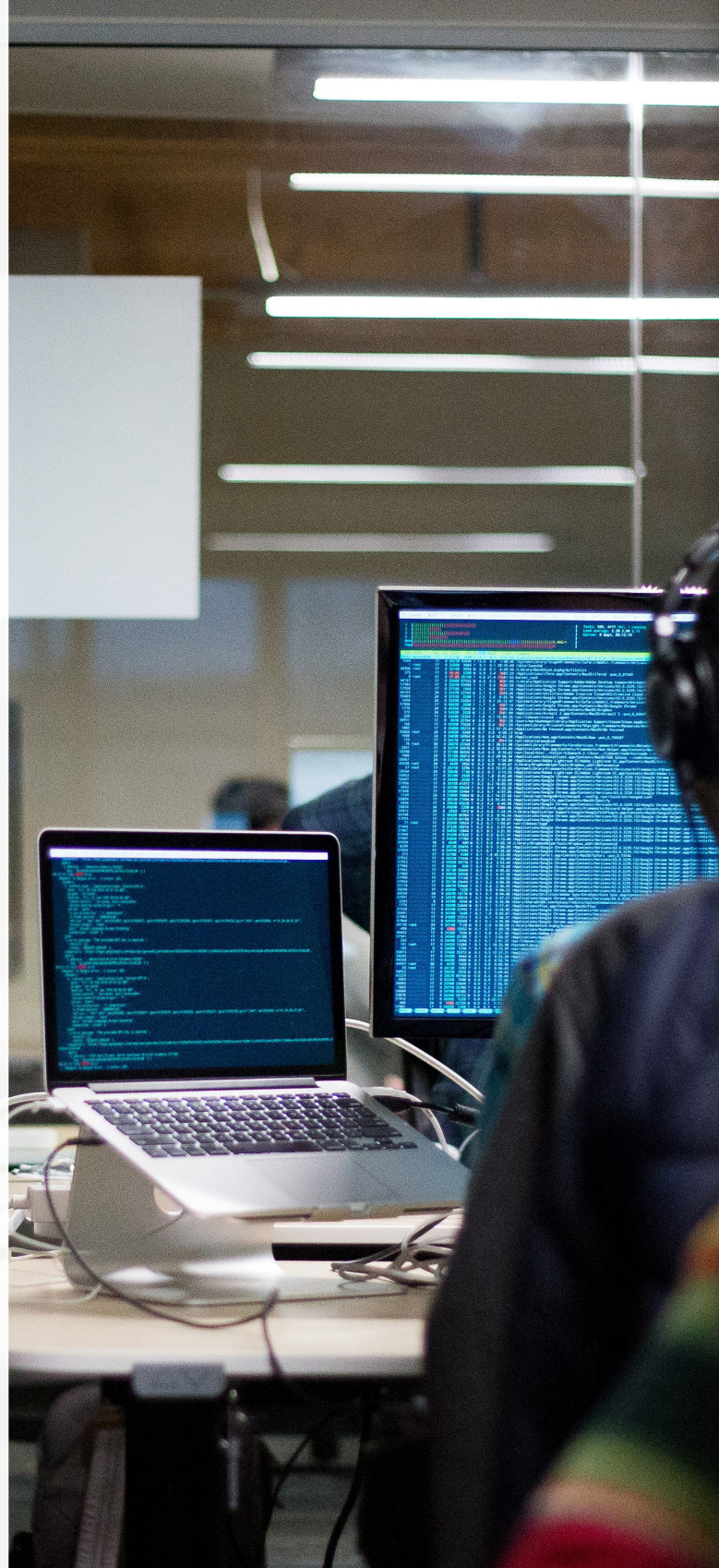
Degree Requirements

Semester I		Credit Hours
CPT 227	Virtualization	3
CPT 147	Introduction to PC Repair/OS	3
ENG ____*	Select <u>one</u> of the following:	3
	ENG 101 College Writing	
	ENG 105 College Writing Seminar	(4)
MAT ____*	Select <u>one</u> of the following:	3
	MAT 102 Numbers and Logic	
	MAT 115 Quantitative Reasoning	
	MAT 122 College Algebra	
	MAT 125 Finite Mathematics	
	MAT 135 Statistics	
CPT 201	Linux	3
Semester II		
CPT ____	Select one of the following:	3
	CPT 127 Introduction to Python	
	CPT 130 Introduction to Visual Basic	
	CPT 245 Introduction to Java	
	CPT 250 Programming in C	
CPT 235	Introduction to Networking	3
CHY/PHY	Science with lab	4
ENG 201	Technical Writing	3
____	Elective: CPT	3
Semester III		
COM 100	Public Speaking	3
CPT 266	Server Administration	3
CPT 271	Introduction to Network Security	3
MAT ____*	Select <u>one</u> of the following:	3
	MAT 102 Numbers and Logic	
	MAT 115 Quantitative Reasoning	
	MAT 122 College Algebra	
	MAT 125 Finite Mathematics	
	MAT 135 Statistics	
____	Elective: Humanities	3
Semester IV		
____	Elective: Mathematics or Science	3
____	Elective: Social Science (advisor approved)	3
____	Elective: General Education (advisor approved)	3
PHI 101	Critical Thinking	3
CPT 298	Capstone	3
Total Credit Hour Requirements		61-62

*Placement determined by assessment test scores and/or prior college coursework



Computer Technology Prerequisites: Algebra I



Office of Admissions

1250 Turner Street • Auburn, ME 04210
(207) 755-5273 • enroll@cmcc.edu

www.cmcc.edu

Find CMCC on social media at CMCCMaine!

