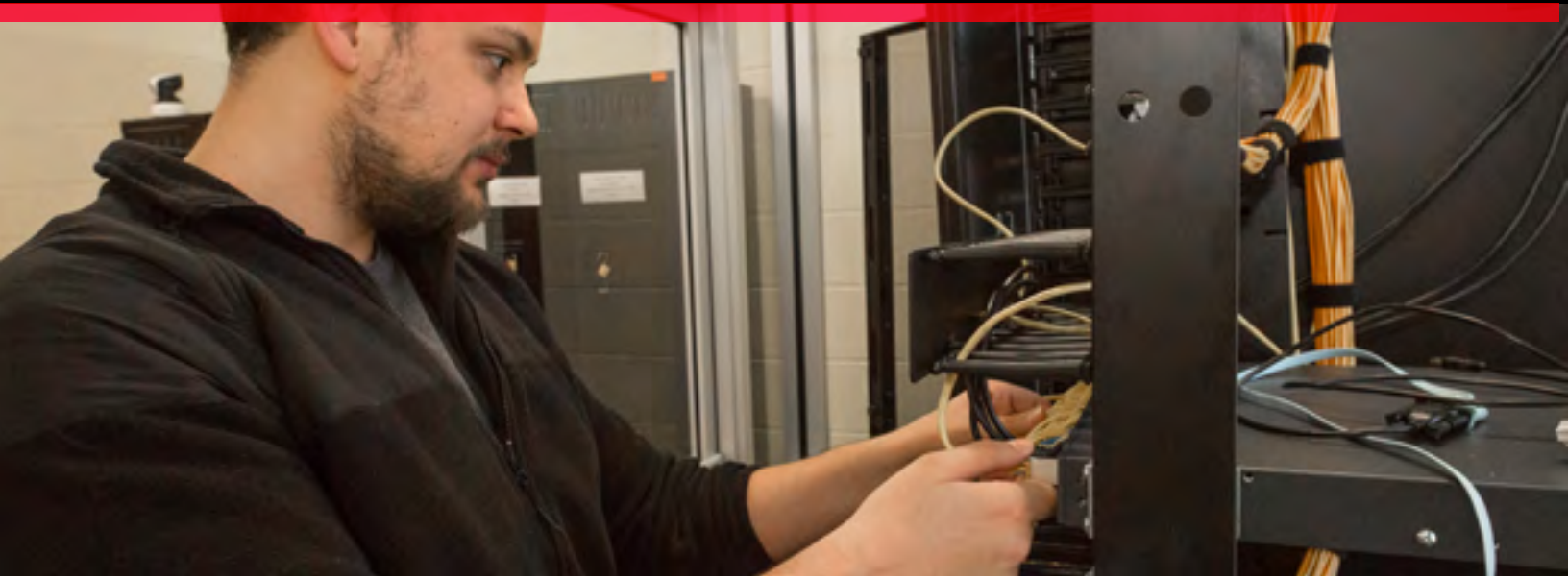


COMPUTER TECHNOLOGY

Associate in Science



Prepare for transfer to a baccalaureate degree. The Associate in Science in Computer Technology is designed to articulate with the final two years of undergraduate study at a four-year college or university.

Focus on:

- Preparation for transfer to a four-year college or university
- Knowledge of computing in the PC environment
- Developing specific diagnostic, repair, installation, network and programming skills.

Prepare for industry certifications such as:

- A+
- NET+
- Microsoft Certified Professional (MCP)
- Microsoft Certified Solutions Expert (MCSE)

Graduates may pursue careers in:

- **Computer Science**
- **Health Information Management**
- **Information Technology**
- **Cybersecurity**
- **Data Analytics**
- **Geographic Information Systems**
- **Network & Telecommunications**
- **Software Information**
- **Information Security**
- **Management Information Systems**

Interested in heading right into the workforce? Consider the Computer Technology Associate in Applied Science degree.

Degree Requirements

Semester I	Credit Hours
BCA 152 Integrated Software Applications	3
CPT 147 Introduction to PC Repair/OS	3
ENG ___* Select <u>one</u> of the following:	3
ENG 101 College Writing	
ENG 105 College Writing Seminar	(4)
MAT ___* Select <u>one</u> of the following:	3
MAT 102 Numbers and Logic	
MAT 122 College Algebra	
MAT 125 Finite Mathematics	
MAT 135 Statistics	
CPT 201 Linux	3
 Semester II	
CPT ___ Select <u>one</u> of the following:	3
CPT 127 Introduction to Python	
CPT 130 Introduction to Visual Basic	
CPT 245 Introduction to Java	
CPT 250 Programming in C	
CPT 235 Introduction to Networking	3
CHY/PHY Science with lab	4
ENG 201 Technical Writing	3
___ Elective: CPT	3
 Semester III	
COM ___ Select <u>one</u> of the following:	3
COM 100 Public Speaking	
COM 101 Interpersonal Communication	
COM 121 Group Process	
CPT 266 Server Administration	3
CPT 271 Introduction to Network Security	3
INS 101 Technology and Society	3
MAT ___* Select <u>one</u> of the following:	3
MAT 102 Numbers and Logic	
MAT 122 College Algebra	
MAT 125 Finite Mathematics	
MAT 135 Statistics	
 Semester IV	
___ Select <u>one</u> of the following:	3
BCA 246 Database Management	
CPT 166 Fundamentals of Structured Query Language	
Elective: Social Science (advisor approved)	3
Elective: General Education (advisor approved)	3
PHI 101 Critical Thinking	3
CPT 298 Capstone	3
 Total Credit Hour Requirements	 61-62



*Placement determined by assessment test scores and/or prior college coursework

Office of Admissions

1250 Turner Street • Auburn, ME 04210
(207) 755-5273 • enroll@cmcc.edu

www.cmcc.edu

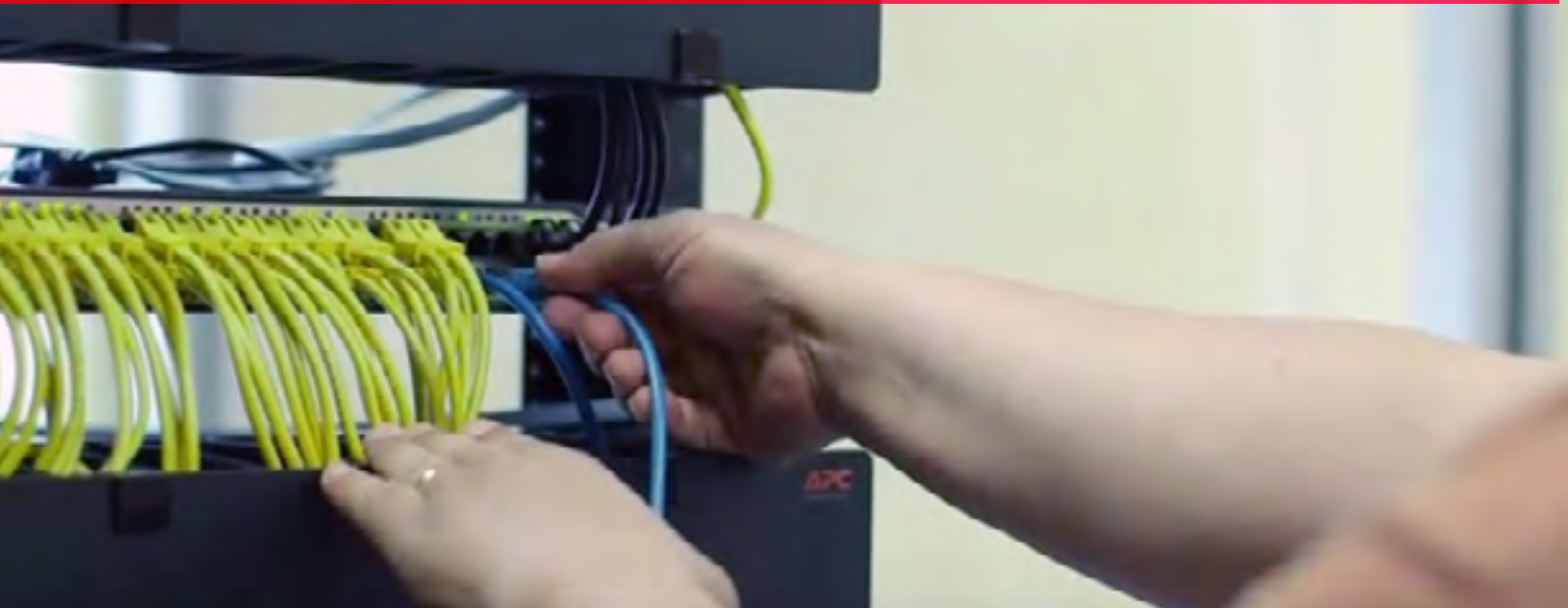
Find CMCC on social media at CMCCMaine!



Computer Technology Prerequisites: Algebra I

COMPUTER TECHNOLOGY

Associate in Applied Science



The Associate in Applied Science in Computer Technology prepares students for the workforce, in a variety of computer focused careers.

Students gain knowledge and experience in:

- Computing in the PC environment
- Development of specific diagnostic, repair, installation, network and programming skills

In addition to academics and hands-on experience in labs, students have the opportunity to prepare for in-demand industry standard certifications. Some examples include:

- A+
- NET+
- Microsoft Certified Professional (MCP)
- Microsoft Certified Solutions Expert (MCSE)

Graduates may pursue careers in:

- **PC Computer Repair Technicians**
- **PC Software Resource Personnel**
- **Network Administrators**
- **PC Computer Trainers**
- **PC/Network Sales Personnel**

Interested in transferring to a four-year college or university? Consider the Computer Technology Associate in Science degree.

Degree Requirements

Semester I		Credit Hours
BCA 152	Integrated Software Applications	3
COM ____	Select <u>one</u> of the following:	3
	COM 101 Interpersonal Communications	
	COM 100 Public Speaking	
	COM 121 Group Process	
CPT 147	Introduction to PC Repair/OS	3
CPT 252	Web Development	3
ENG ____*	Select <u>one</u> of the following:	3
	ENG 101 College Writing	
	ENG 105 College Writing Seminar	(4)
Semester II		
CPT ____	Select <u>one</u> of the following:	3
	CPT 127 Introduction to Python	
	CPT 130 Introduction to Visual BASIC	
	CPT 245 Introduction to Java	
	CPT 250 Programming in C	
CPT 201	Linux	3
CPT 235	Introduction to Networking	3
MAT ____*	Select <u>one</u> of the following:	3
	MAT 102 Numbers and Logic	
	MAT 122 College Algebra	
	MAT 125 Finite Mathematics	
	MAT 135 Statistics	
____	Elective: Humanities/Social Science	3
Semester III		
CPT 266	Server Administration	3
ENG 201	Technical Writing	3
MAT ____*	Select <u>one</u> of the following:	3
	MAT 102 Numbers and Logic	
	MAT 122 College Algebra	
	MAT 125 Finite Mathematics	
	MAT 135 Statistics	
____	Elective: CPT	3
____	Elective: CPT	3
Semester IV		
CPT 273	Process Automation & Shell Scripting	3
CPT 298	Capstone	3
____	Elective: CPT	3
____	Elective: Open (CPT recommended)	3
____	Elective: Humanities/Social Science	3

Total Credit Hour Requirements 60-61

*Placement determined by assessment test scores and/or prior college coursework



Computer Technology Prerequisites: Algebra I

Office of Admissions

1250 Turner Street • Auburn, ME 04210
(207) 755-5273 • enroll@cmcc.edu

www.cmcc.edu

Find CMCC on social media at CMCCMaine!

