

HUMAN SERVICES

Associate in Applied Science



Turn your desire to help others into a great career! The Human Services degree prepares graduates for entry-level positions in:

- **Substance abuse & mental health services**
- **Developmental disabilities**
- **Child and adolescent services**
- **Gerontology**

Students may choose a Human Services or Addiction Specialization advising pathway.

Upon completion of the nine courses identified by (**) on the back page, students are eligible for certification as a MHRT/C technician (Mental Health Rehabilitation Technician/Community).

Graduates may pursue the following careers:

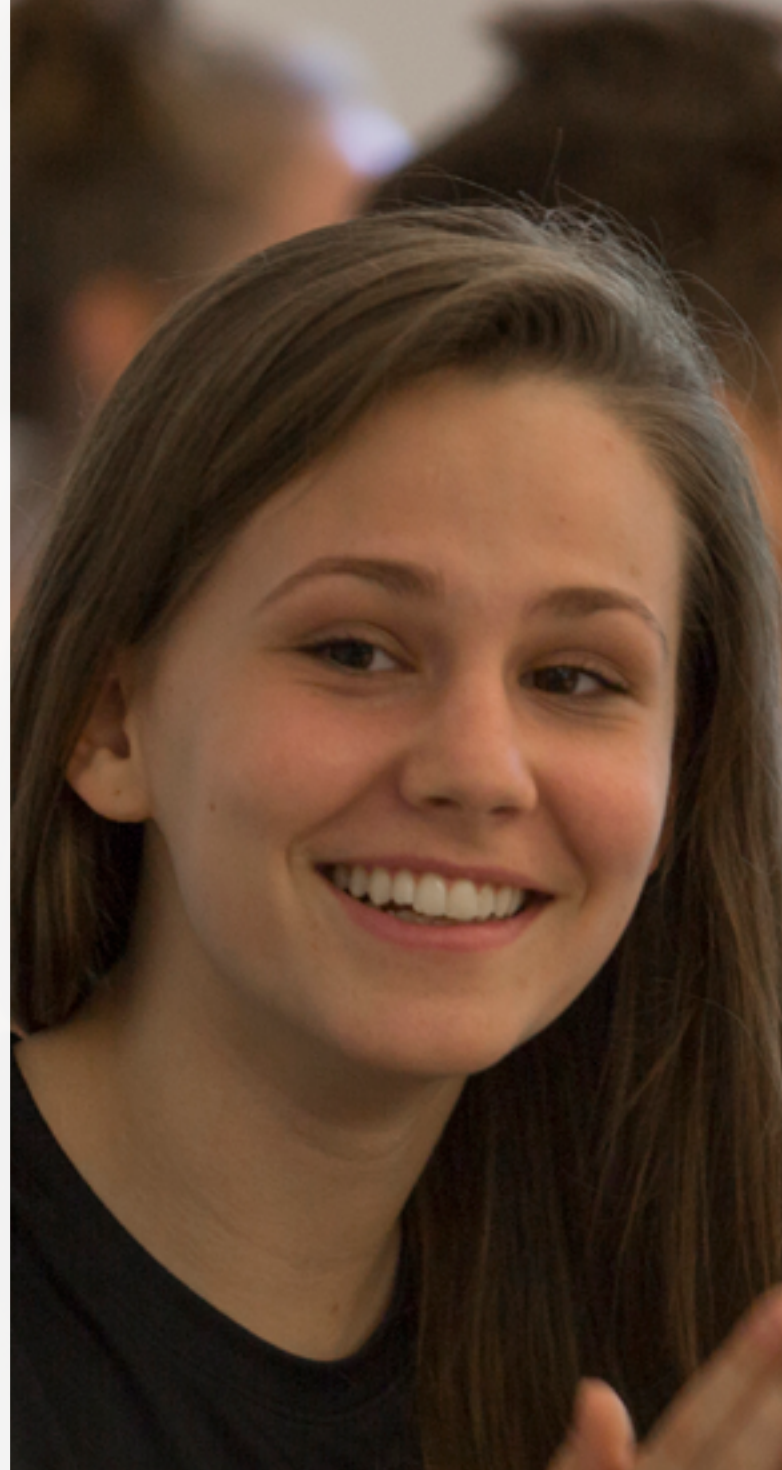
- **Activity Therapist Associate**
- **Addiction Counselor**
- **Crisis Counselor**
- **Human Development Associate**
- **Mental Health Associate**
- **Rehabilitation Worker**
- **Family Worker**
- **Activity Director/Associate**
- **Volunteer Coordinator**

Graduates may also seek employment at:

- **Community mental health centers**
- **Hospitals**
- **Social services and mental health programs**
- **Senior assistant facilities**
- **Substance abuse facilities**
- **Correctional facilities**

Degree Requirements

Semester I		Credit Hours
BIO 101	General Biology Lecture	3
BIO 102	General Biology Lab (or higher)	1
*ENG ____	Select one of the following:	
	ENG 101 College Writing	3
	ENG 105 College Writing Seminar	(4)
**HUS 112	Introduction to Community Mental Health	3
**SOC 200	Issues in Diversity	3
____	Advising Pathway, select one :	3
	PSY 111 Developmental Psychology	
	HUS 161 Addiction Over the Lifespan	
Semester II		
**PSY 151	Interviewing and Counseling	3
**PSY 212	Abuse, Trauma and Recovery	3
**PSY 202	Developmental Disabilities and Psychosocial Rehabilitation	3
PSY 101	Introduction to Psychology	3
____	Advising Pathway, select one :	3
	SOC 220 Sociology of the Family	
	HUS 160 Addiction and the Family	
Semester III		
**PSY 204	Voc. Aspects of Disability and Voc. Rehabilitation Counseling	3
**HUS 155	Case Management	3
____	Advising Pathway, select one :	3
	PHI 101 Critical Thinking	
	HUS 101 Critical Thinking and the Addictions Professional	
*MAT ____	Elective: MAT 100 (or higher)	3
	(MAT 100 strongly recommended as this is a prerequisite for MAT 135)	
____	Advising Pathway, select one :	4
	HUS 241 Human Serv. Practicum I	
	HUS 242 Addiction Specialization Practicum I	
Semester IV		
**SOC 201	Sociology of Aging	3
**HUS 153	Substance Abuse	3
ENG 201	Technical Writing	3
____	Advising Pathway, select one :	4
	HUS 251 Human Serv. Practicum II	
	HUS 252 Addiction Specialization Practicum II	
*MAT ____	Elective: MAT 101 (or higher)	
	(MAT 135 strongly recommended for students interested in transferring to a four-year institution)	
Total Credit Hour Requirements		61



*Placement determined by assessment test scores and/or prior college coursework

** Courses required for MHRT/C (Mental Health Rehabilitation Technician/Community) Certificate. See the College Catalog for full details at www.cmcc.edu.



Human Services Degree Prerequisites/Requirements:

High school prerequisite(s) for program admission: MAT 100. Please see the College Catalog, available at www.cmcc.edu, for additional requirements needed prior to registration in the first practicum course including physical exam, required immunizations, and more.

Office of Admissions

1250 Turner Street • Auburn, ME 04210
(207) 755-5273 • enroll@cmcc.edu

www.cmcc.edu

Find CMCC on social media at CMCCMaine!

