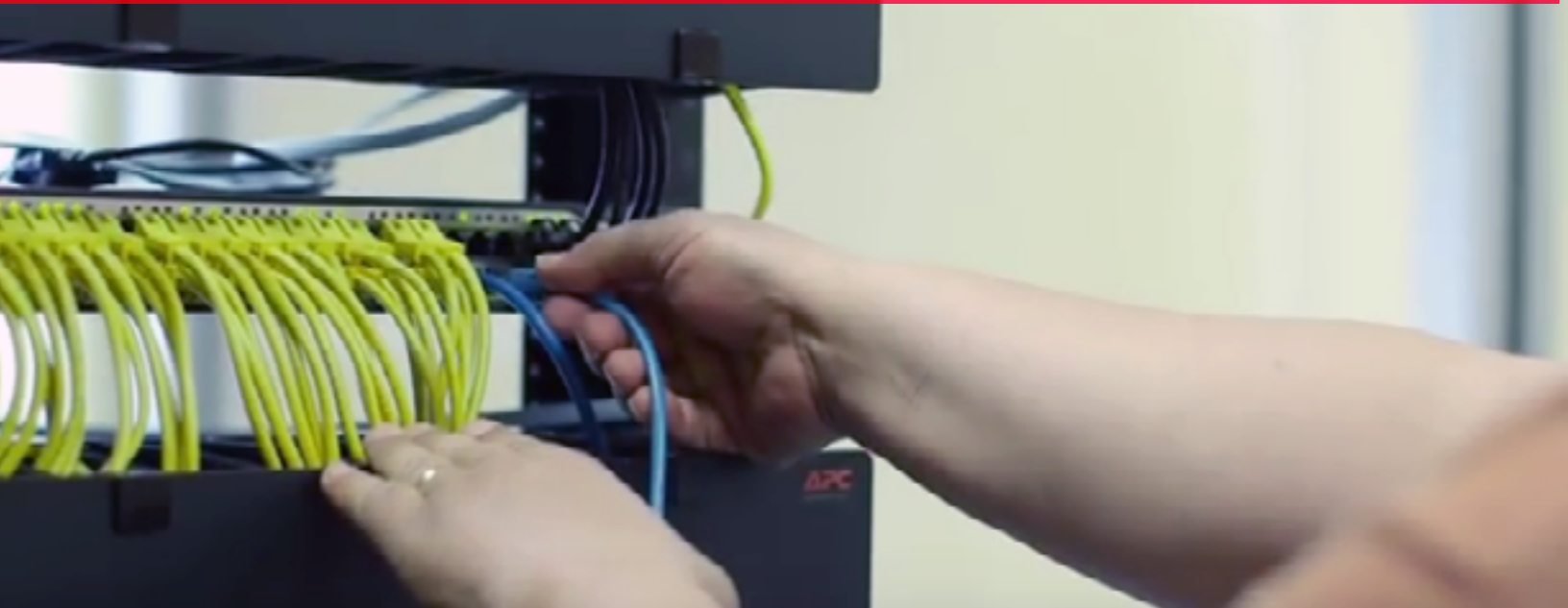


# COMPUTER TECHNOLOGY

Associate in Applied Science



**The Associate in Applied Science in Computer Technology prepares students for the workforce, in a variety of computer focused careers.**

Students gain knowledge and experience in:

- Computing in the PC environment
- Development of specific diagnostic, repair, installation, network and programming skills

In addition to academics and hands-on experience in labs, students have the opportunity to prepare for in-demand industry standard certifications. Some examples include:

- A+
- NET+
- Microsoft Certified Professional (MCP)
- Microsoft Certified Solutions Expert (MCSE)

**Graduates may pursue careers in:**

- **PC Computer Repair Technicians**
- **PC Software Resource Personnel**
- **Network Administrators**
- **PC Computer Trainers**
- **PC/Network Sales Personnel**

**Interested in transferring to a four-year college or university? Consider the Computer Technology Associate in Science degree.**

## Degree Requirements

Semester I	Credit Hours
BCA 152	Integrated Software Applications 3
COM ____	Select <b>one</b> of the following: 3
	COM 101 Interpersonal Communications
	COM 100 Public Speaking
	COM 121 Group Process
CPT 147	Introduction to PC Repair/OS 3
CPT 252	Web Development 3
ENG ____	Select <b>one</b> of the following: 3
	*ENG 101 College Writing
	ENG 105 College Writing Seminar (4)
Semester II	
CPT 130	Introduction to Visual BASIC 3
CPT 201	Linux 3
CPT 235	Introduction to Networking 3
MAT ____	Select <b>one</b> of the following: 3
	MAT 102* Numbers and Logic
	MAT 135 Statistics
____	Elective: Humanities/Social Science 3
Semester III	
CPT 266	Server Administration 3
ENG 201	Technical Writing 3
MAT ____	Select <b>one</b> of the following: 3
	MAT 122* College Algebra
	MAT 125 Finite Mathematics
____	Elective: CPT 3
____	Elective: CPT 3
Semester IV	
CPT 272	MS Exchange/IIS 3
CPT 298	Capstone 3
____	Elective: CPT 3
____	Elective: Open (CPT recommended) 3
____	Elective: Humanities/Social Science 3
<b>Total Credit Hour Requirements</b>	<b>60-61</b>

\*Placement determined by assessment test scores and/or prior college coursework



**Computer Technology Prerequisites:** Algebra I

### Office of Admissions

1250 Turner Street • Auburn, ME 04210  
(207) 755-5273 • enroll@cmcc.edu

[www.cmcc.edu](http://www.cmcc.edu)

Find CMCC on social media at CMCCMaine!

